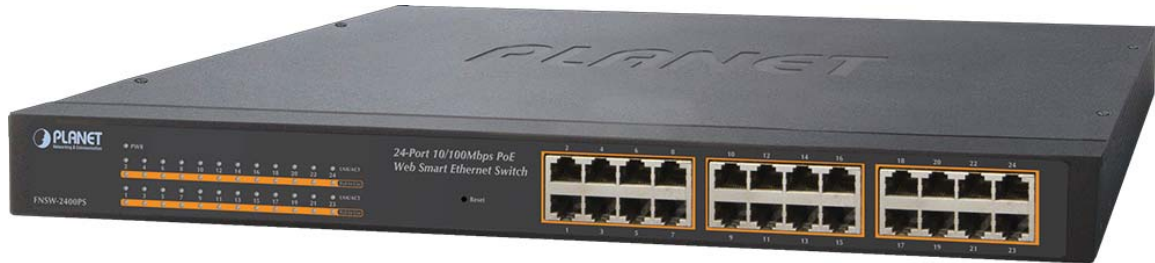


KPS-FNSW-2400P

24-Port 10/100Mbps PoE Web Smart Ethernet Switch



SPECIFICATION

Product	24-Port 10/100Mbps PoE Web Smart Ethernet Switch
Model	FNSW-2400PS
Hardware Specification	
Ports	24 10/100Base-TX RJ-45 Auto-MDI/MDI-X interfaces
Switch Processing Scheme	Store-and-Forward
Throughput (packet per second)	3.57Mpps@64Bytes
Switch Fabric	4.8Gbps
Address Table	8K entries
Share Data Buffer	1.75Mb embedded memory for packet buffers
Flow Control	Back pressure for Half Duplex, IEEE 802.3x Pause Frame for Full Duplex
Dimension (W x D x H)	445 x 207 x 45 mm (1U height)
Weight	2.55kg
Power Requirement	100~240V AC, 50-60 Hz, 2A
Power Consumption / Dissipation	Max.135 Watts / 460 BTU
Smart Function	
System Configuration	Web interface, SNMP v1
Port Configuration	Port Speed Duplex mode selection Port Disable / Enable
Bandwidth Control	Yes
Broadcast Storm Control	Yes
Port Statistics	Display each port's detail Ethernet traffic counter information
VLAN	24 port-based VLAN groups / 32 IEEE 802.1Q VLAN groups / MTU VLAN
Spanning Tree Protocol	STP, IEEE 802.1D (Spanning Tree Protocol) RSTP, IEEE 802.1w (Rapid Spanning Tree Protocol)
Port Trunking	2 groups of 4-Port 10/ 100Base-TX trunk support, up to 800Mbps bandwidth per trunk group
Port Mirroring	Port mirroring allows monitoring of the traffic across any port in real time
QoS	Allows to assign low / high priority on each port First-In-First-Out, All-High-before-Low, Weight-Round-Robin QoS policy
MAC Address / TCP & UDP Filter	Yes
IGMP Snooping v1 / v2	Allows to Disable or Enable
Power over Ethernet	
PoE Standard	IEEE 802.3af Power over Ethernet / PSE
PoE Power Supply Type	Mid-Span
PoE Power output	Per Port 48V DC, 350mA . Max. 15.4Watts
Power Pin Assignment	4/5(-), 7/8(+)
PoE Power Budget	125Watts
Standards Conformance	
Regulation Compliance	FCC Part 15 Class A, CE
Standards Compliance	IEEE 802.3 Ethernet IEEE 802.3u Fast Ethernet IEEE 802.3af Power over Ethernet (15.4Watts) IEEE 802.3x Full-Duplex flow control IEEE 802.1Q VLAN IEEE 802.1p QoS IEEE 802.1D Spanning Tree Protocol IEEE 802.1w Rapid Spanning Tree Protocol
Environment	
Temperature	Operating: 0~50 Degree C Storage: -10~70 Degree C
Humidity Operating	5~95%, Storage: 5~95% (Non-condensing)