

ST-IRD15B-811

700TVL 1/3" SONY EX-view HAD II CCD 960H IR Dome Camera



FEARURES:

- ◆1/3" SONY EX-view HAD II CCD
- ◆DSP:Sony Effio-E
- ◆Image Resolution: Color 700TVL
- ◆Min. illumination: 0 Lux (IR ON), Color: 0.06Lux/F1.2, B/W: 0.006Lux/F1.2
- ◆Electronic shutter(Auto), Day/Night, AWB, OSD optional
- ◆UTC function optional, Audio, Din Jack optional, Lighting-proof, DC 12V

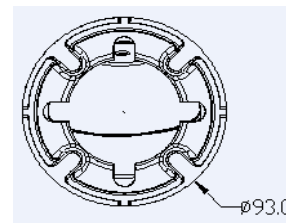
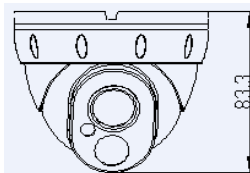
APPLICATIONS:

ST-IRD15B-811 700TVL 1/3" SONY EX-view HAD II CCD 960H IR Dome Camera provide a cost-effective security solution where darker and empty-illumination environment required such as warehouse,basement parking, bar, pipeline,etc.

SPECIFICATION :

Model	ST-IRD15B-811
CAMERA	
Sensor	1/3" SONY EX-view HAD II CCD 960H
Effective pixels	NTSC:976x494,PAL:976x582
Resolution	700TVL
Min. Illumination	0LUX (IR ON)
Scan System	2:1 Interlace
Sync System	Internal
Lens	3.6mm M12 Lens (6mm M12 \2.8mm M12 optional)
Electronic Shutter	Auto
S/N Rate	52 dB (AGC OFF)
Video Output	1.0Vp-p composite video output,75Ω
White balance	ATW
Day/Night	EXT
Gamma	0.45 (Default)
GENERAL	
Power supply	10-15M(1xIRIII), constant current source circuit
Power	DC12V± 10%
IR Distance	320mA±10mA(IR ON)
Operating	-20°C ~ 55°C/ 0%-90%
Dimensions(mm)	83(H)*93(W)mm
Weight/PCS (g)	290g
Qty	16
Carton Dimensions	480(L)*245(W)*240(H)

DIMENTIONS:



All Info. only for reference,please see the subject produce.Any change will not be notified .

